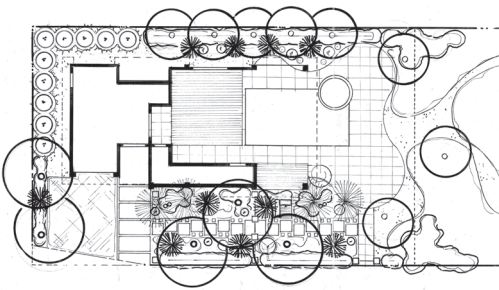


## Nestled in the Dunes on Anna Maria Island

The challenge of this space became its opportunity. The narrow lot, while featuring spectacular Gulf views, didn't offer ample space to provide scale and entry. We were able to achieve this goal through three-dimensional gardening, using varying heights and textures to bring scale to the structure and to create an intimate experience for the user.



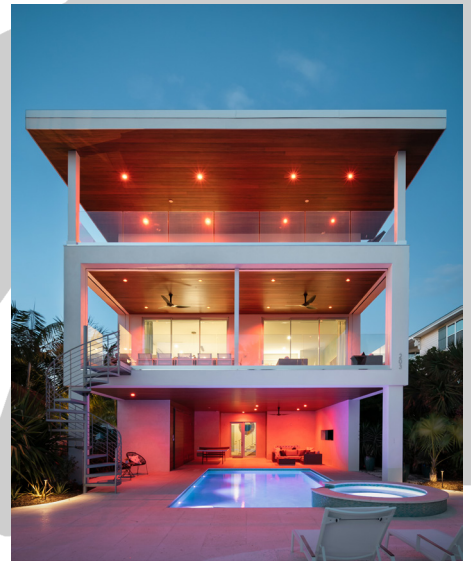
We utilized a playful mixture of foliar textures and hardscapes, like Florida's native Oolite limestone, to promote a tropical vibe. By adding the garden gate, we were able to compartmentalize the landscape, taking maximum advantage of minimum space. In the back, we blurred lines between dunescape and living space by using large sinuous curves in the pool deck areas, and by bringing native shore vegetation and soft sand right to the edge of the pool. The result is the feeling of relaxing on one's own private beach.





SPRUCE AVENUE SEASIDE | ANNA MARIA ISLAND, FLORIDA | YEAR COMPLETED: 2021

## Nestled in the Dunes on Anna Maria Island



michael a. gilkey, inc.  
landscape architects & contractors