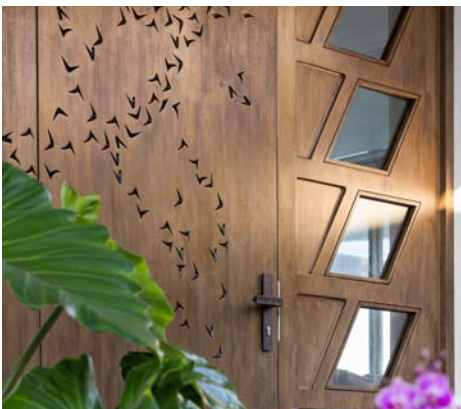


SKYSCAPE | BIRD KEY, FLORIDA | YEAR COMPLETED: 2025

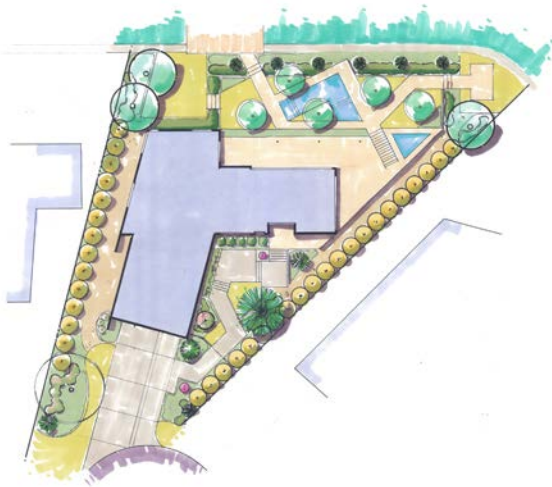
## Unique Architecture and Stunning Views

This pie-shaped lot offers some of the best views in Sarasota, and the architecture took full advantage of this opportunity with striking lines, unique spaces, and a play of light and shadow.



michael a. gilkey, inc.  
landscape architects & contractors

## Unique Architecture and Stunning Views



This project encourages the owners and guests to experience this stunning architecture through a sequence of arrivals based on the concept of a courtyard entry. We lengthened and extended entry moments by adding angles in the walkways that corresponded to angles in the architecture. Dense screening encapsulates the courtyard aesthetic, along with the addition of fun, unique plant elements such as the lipstick palm and giant leopard plant. The architecture in the back creates outdoor living that almost feels like you're on the bow of a ship; we responded with a small executive pool, crisp hardscapes, and a rhythm of solitaire palms that creates an elegant ceiling without obstructing the stellar views.

