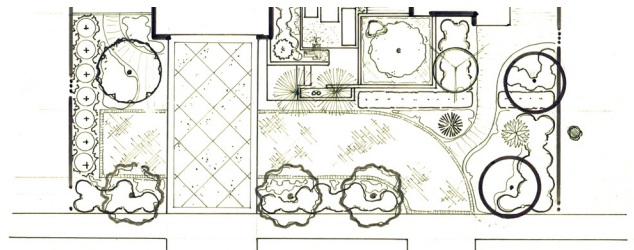


Modern Movement on Orange Avenue

This project is courtyard design at its finest. Three central spaces create a fluid conversation between architecture and landscape. From Orange Avenue, a koi and lotus pond invite entry, while a bold fountain provides kinetic energy and white noise to soften the urban street sounds. To reach the home's front door, one must float across large concrete pads.



The heart of the home is the rear courtyard, centered around the swimming pool and flanked by an outdoor fireplace and kitchen. Finally, an intimate courtyard provides a refuge for the homeowners on a more private scale, accessible only through the master suite. Glass orchids and a tropical garden rich in color and texture complete this magical sequence.



LOTUS ON ORANGE | SARASOTA, FLORIDA | YEAR COMPLETED: 2015 | ARCHITECT: LEADER DESIGN STUDIO

Modern Movement on Orange Avenue



michael a. gilkey, inc.
landscape architects & contractors