

MODERN COASTAL | FLORIDA | YEAR COMPLETED: 2019

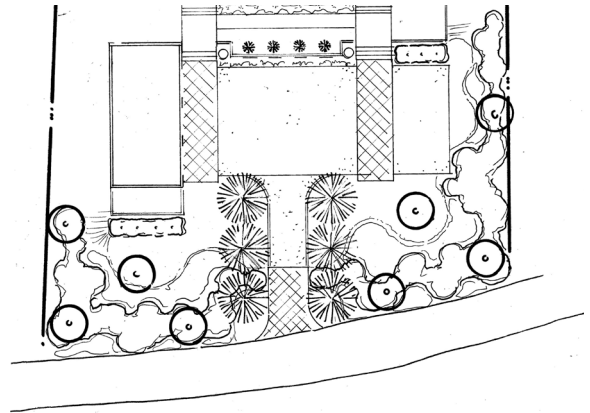
Modern Architecture Meets Coastal Hammock

The vision for this project was to create the aesthetic of a true beach house.

The connection between home and coastal environment was paramount to every design decision.



We achieved the beach house aesthetic by recreating the native coastal hammock and dune system throughout the landscape, evoking the look of architecture carved of nature. The result is a contextual landscape that looks like it hasn't changed in a century. As the landscape approaches the architecture, there are contemporary details, custom concrete pieces, and sculptural elements such as bromeliad and yucca, in keeping with the modern design of the home. To diminish the impact of the necessary vehicular circulation space on its natural context, we used a shell finish concrete and aggregate driveway. Instead of turf, beach compatible sand creates the sense of arrival at this beach destination.



michael a. gilkey, inc.
landscape architects & contractors

MODERN COASTAL | FLORIDA | YEAR COMPLETED: 2019

Modern Architecture Meets Coastal Hammock



michael a. gilkey, inc.
landscape architects & contractors