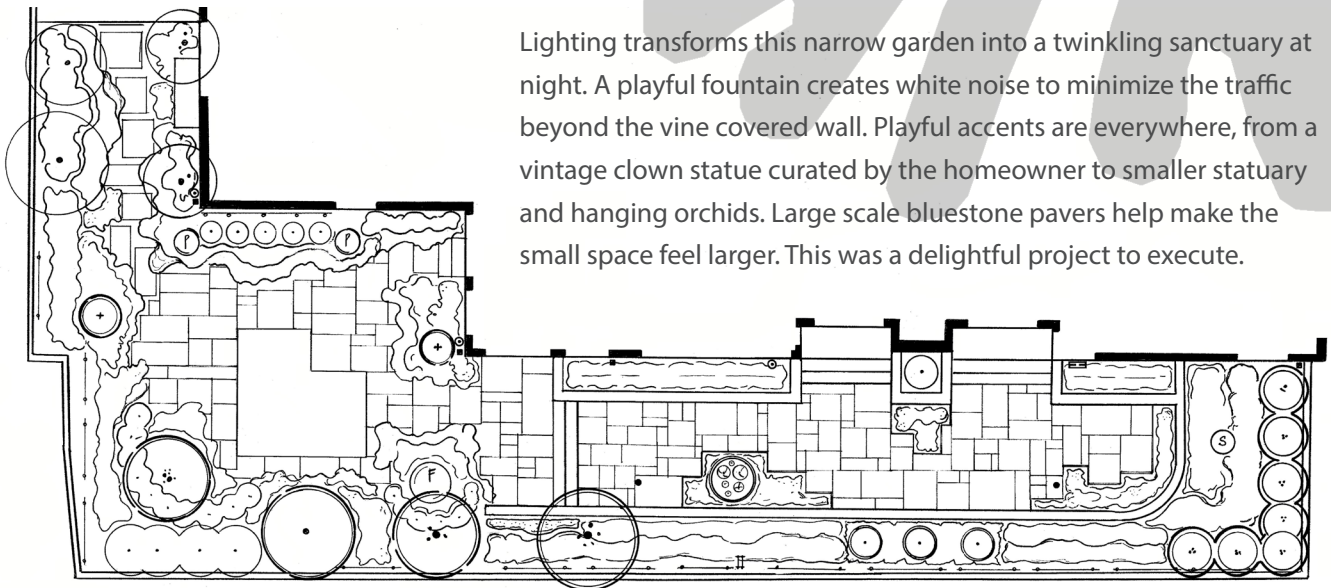
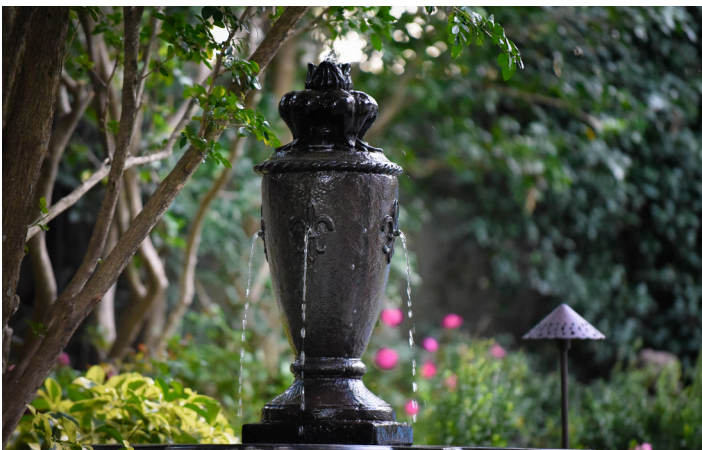


Night Lights, Big City

This charming residence is tucked into a small neighborhood between two bustling downtown streets. The challenge was to maximize the potential of this narrow garden space, and to soften the large walls and noisy traffic. Landscape lighting brings delightful details to life when the sun goes down.



Lighting transforms this narrow garden into a twinkling sanctuary at night. A playful fountain creates white noise to minimize the traffic beyond the vine covered wall. Playful accents are everywhere, from a vintage clown statue curated by the homeowner to smaller statuary and hanging orchids. Large scale bluestone pavers help make the small space feel larger. This was a delightful project to execute.



LINCOLN PARK GARDEN | SARASOTA, FLORIDA | YEAR COMPLETED: 2017

Night Lights, Big City



michael a. gilkey, inc.
landscape architects & contractors