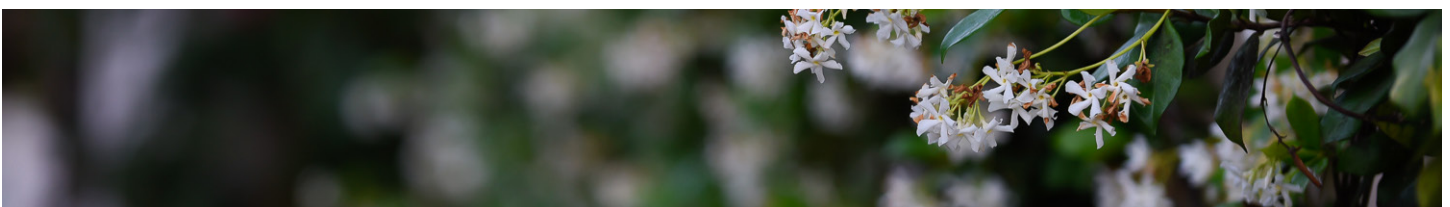
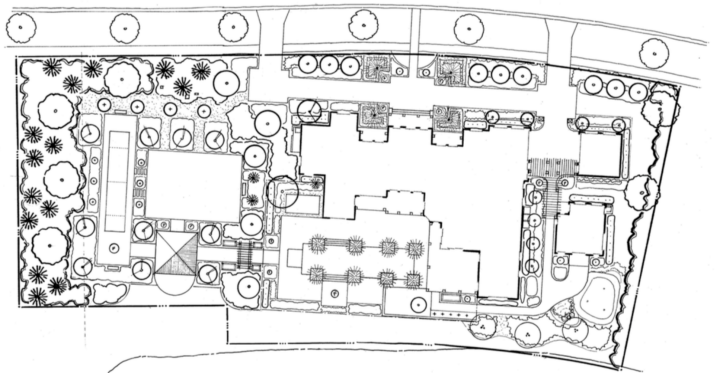


Garden Charm in a Golf Course Community

The family that occupies this golf course home has welcoming arms. Designed for entertaining, the dramatically renovated landscape includes a contemporary garden house on axis with the existing pool, an event lawn, a bocce court, an expansive swimming pool, and areas for seating. There are surprises around every corner in this classic courtyard garden.



Just as the autocourt provides a strong axis in the front yard, the swimming pool and series of surrounding spaces, with its matched solitaire palms, creates a stunning line of sight in the back, connecting the residence with the garden house and lawn. In addition to the program elements for entertaining, our clients asked for a strong edible component to the garden: citrus trees, raised garden boxes, herbs and more. Fragrance is provided in trellis of confederate jasmine near the garage, and in sweet almond and lilac for guests enjoying the bocce court and adjacent backyard spaces.



LAKEWOOD RANCH COURTYARDS | LAKEWOOD RANCH, FLORIDA | YEAR COMPLETED: 2017

Garden Charm in a Golf Course Community



michael a. gilkey, inc.
landscape architects & contractors